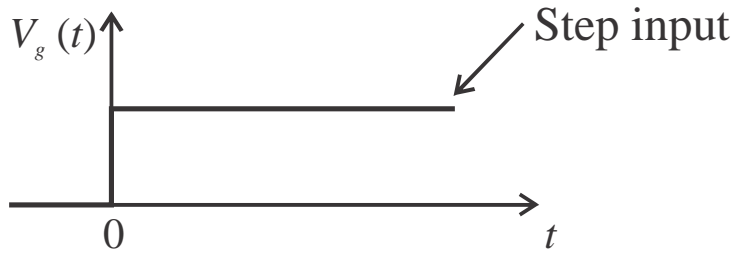
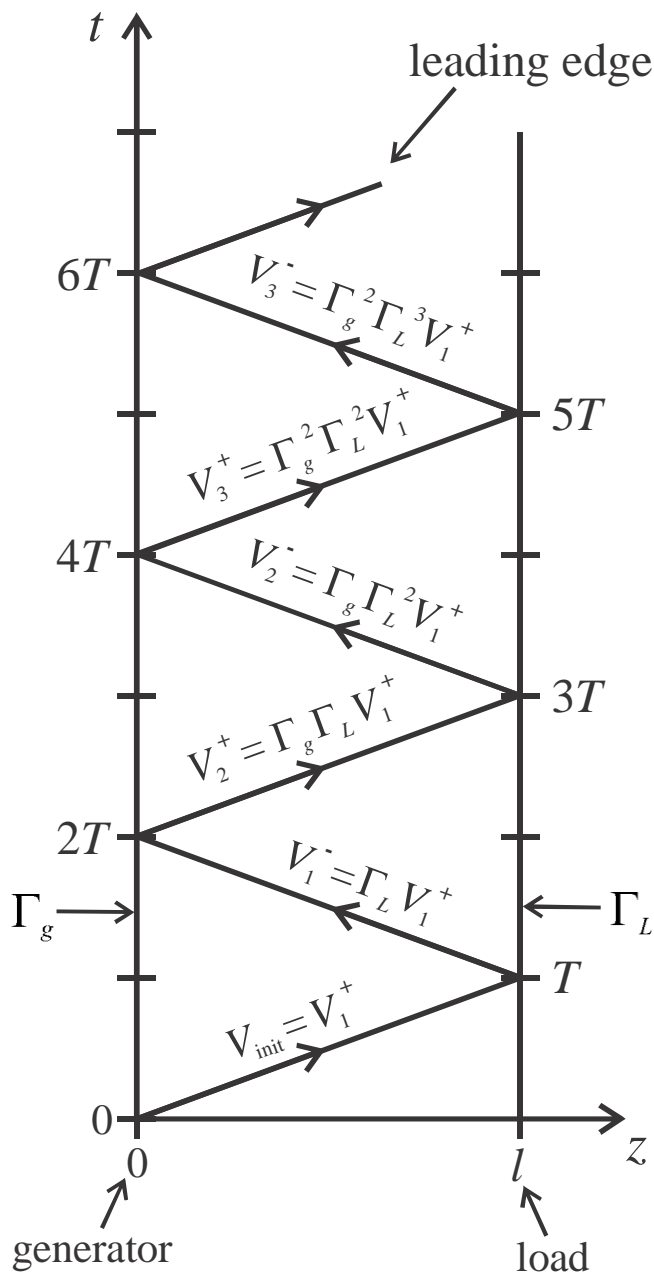


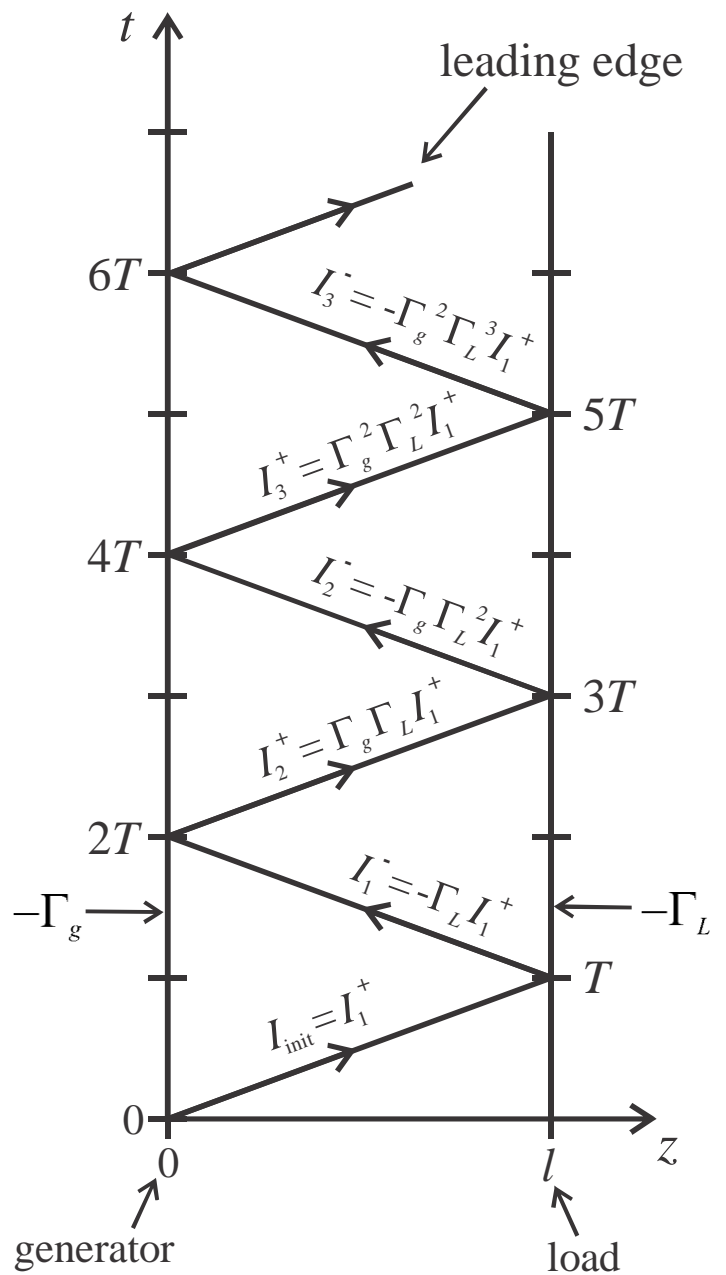
Bounce Diagrams (AKA: reflection diagrams) are a handy graphical tool for transient transmission line problems.

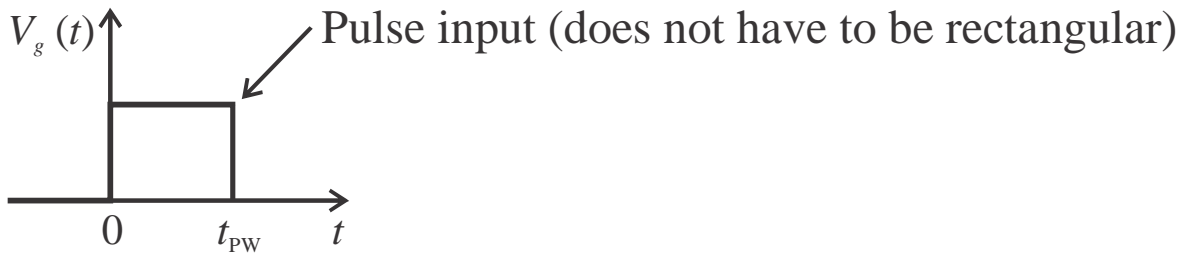


### Voltage



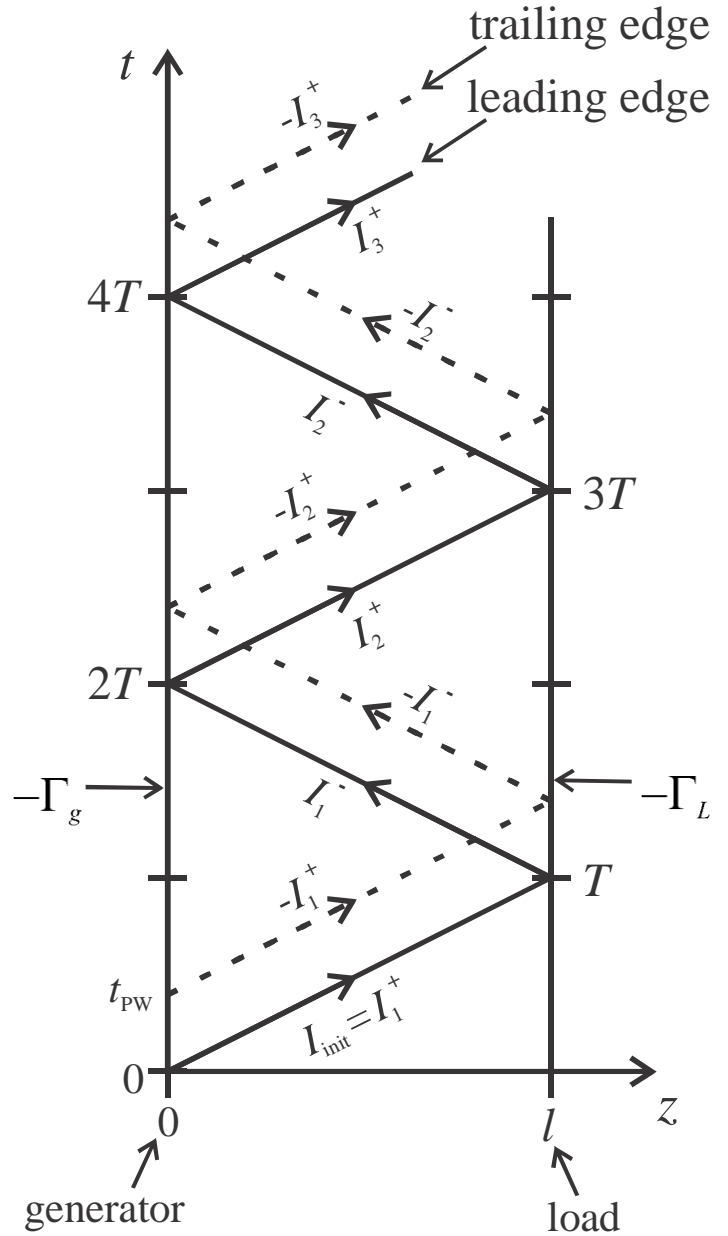
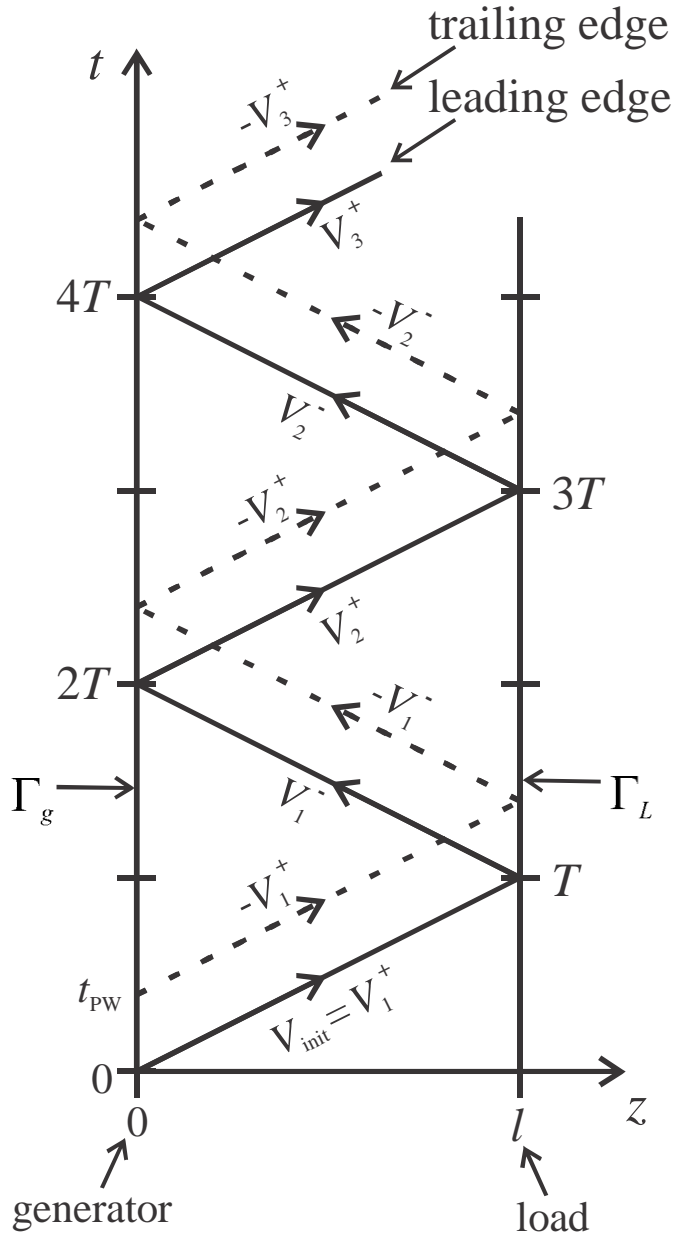
### Current





### Voltage

### Current



- Draw regular bounce diagram for leading edge of pulse.
- Draw another bounce diagram delayed in time by  $t_{PW}$ , with all coefficients with opposite sign, for trailing edge of pulse. This turns off the pulse.